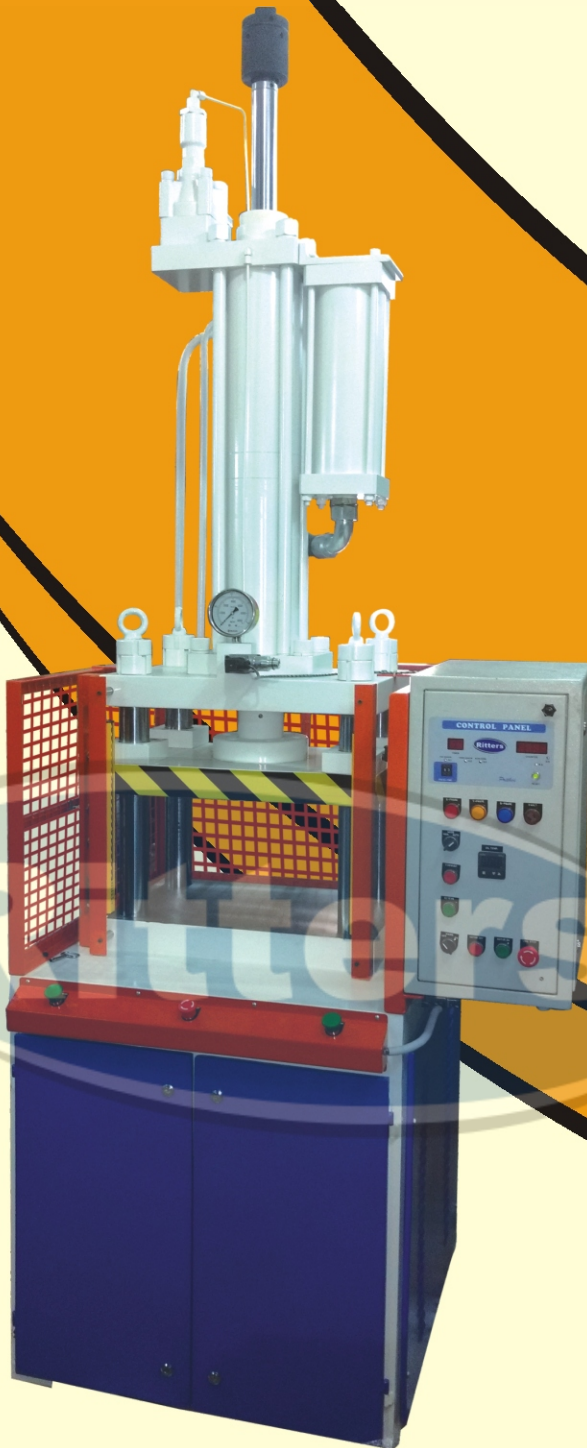




## HIGH SPEED HYDRAULIC PRESS



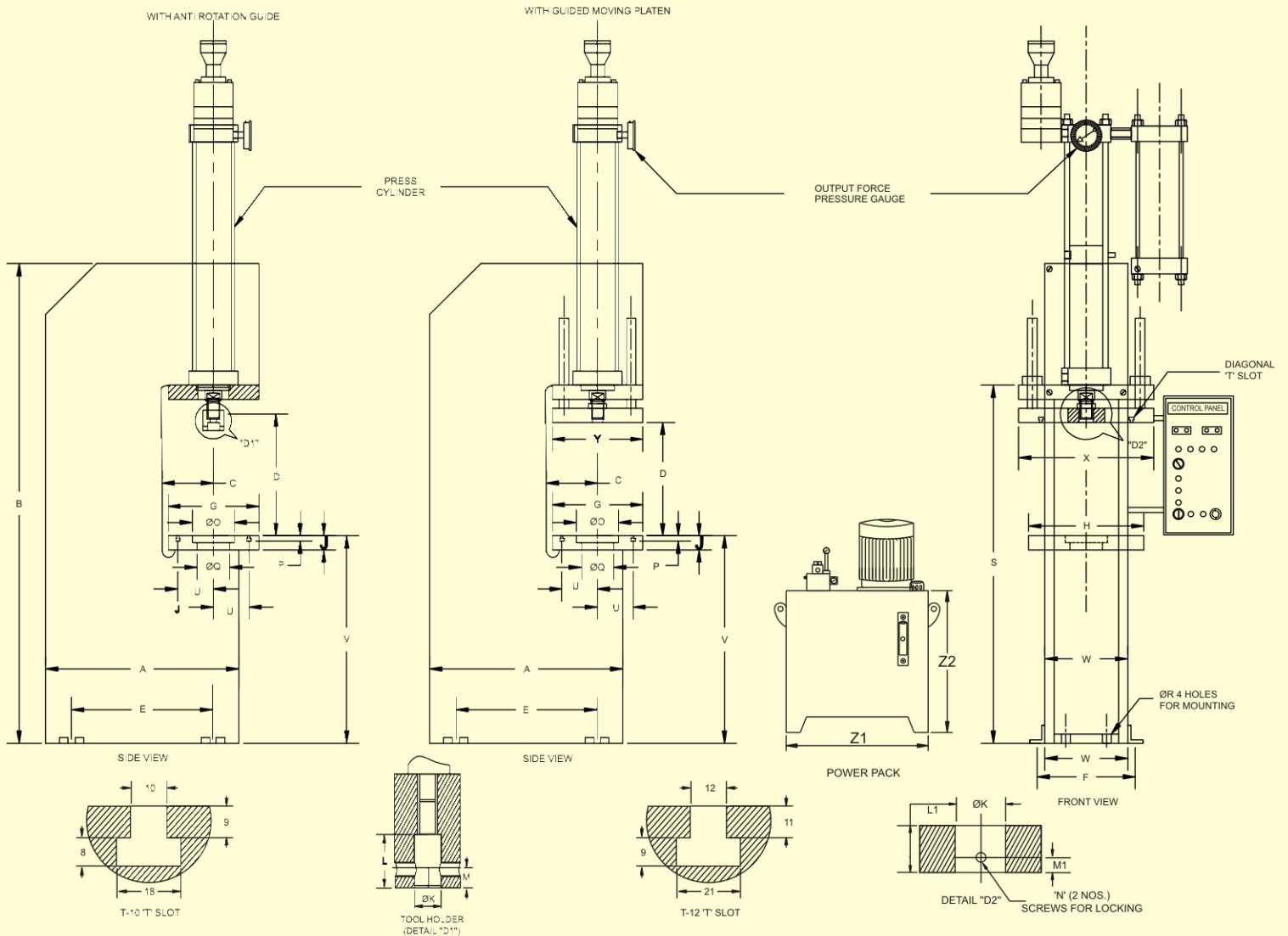
*Incorporating  
Indigenously Developed  
New Design*

*Faster Action  
Energy Efficient*

*Flexibility  
Low Oil Temperature*

# 'C' FRAME PRESS

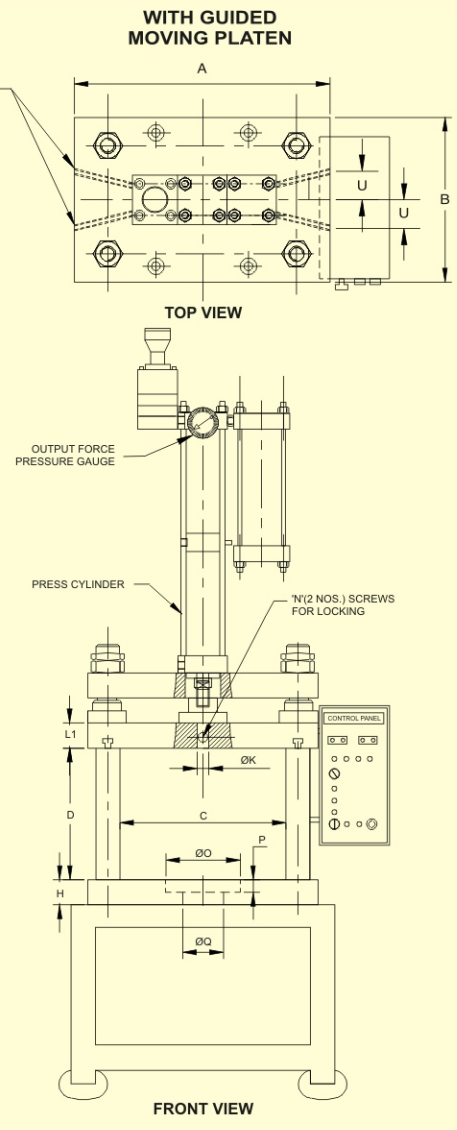
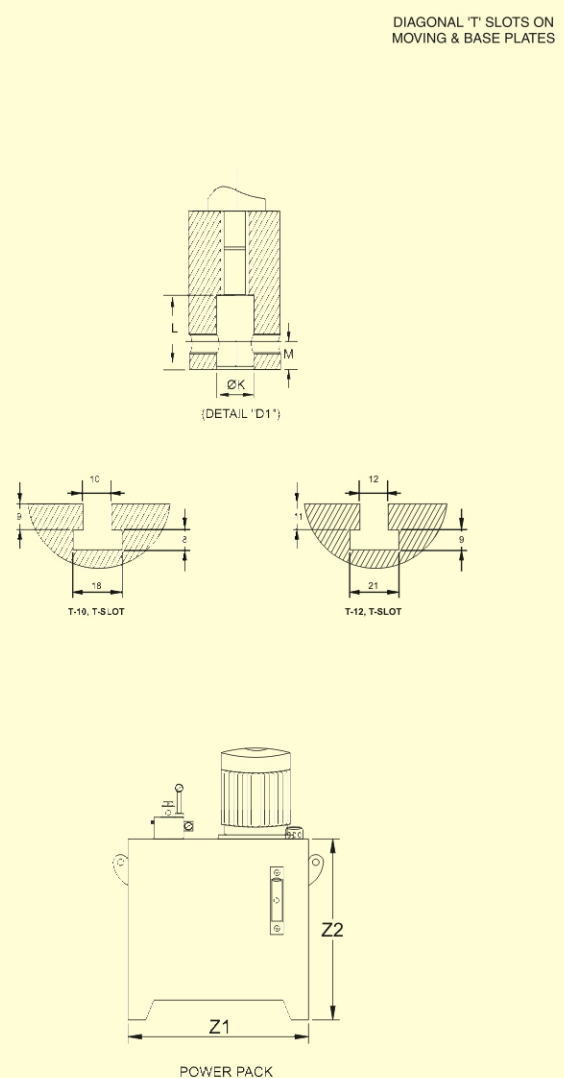
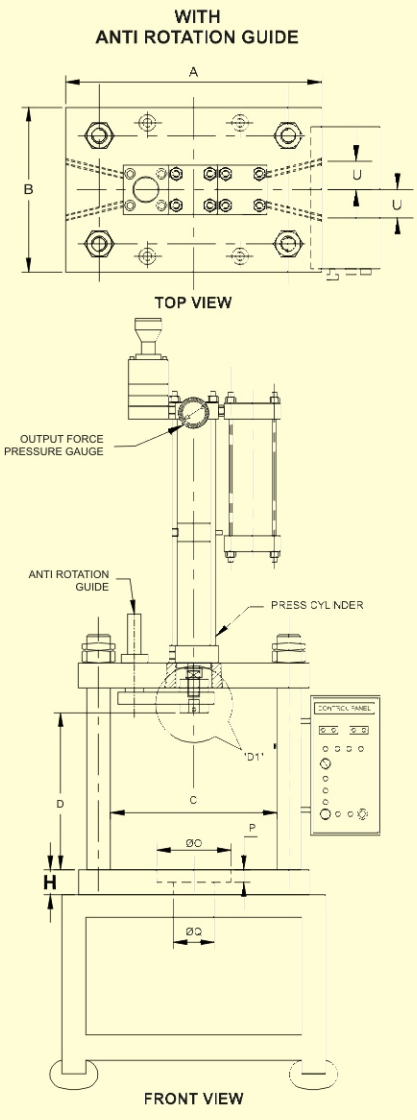
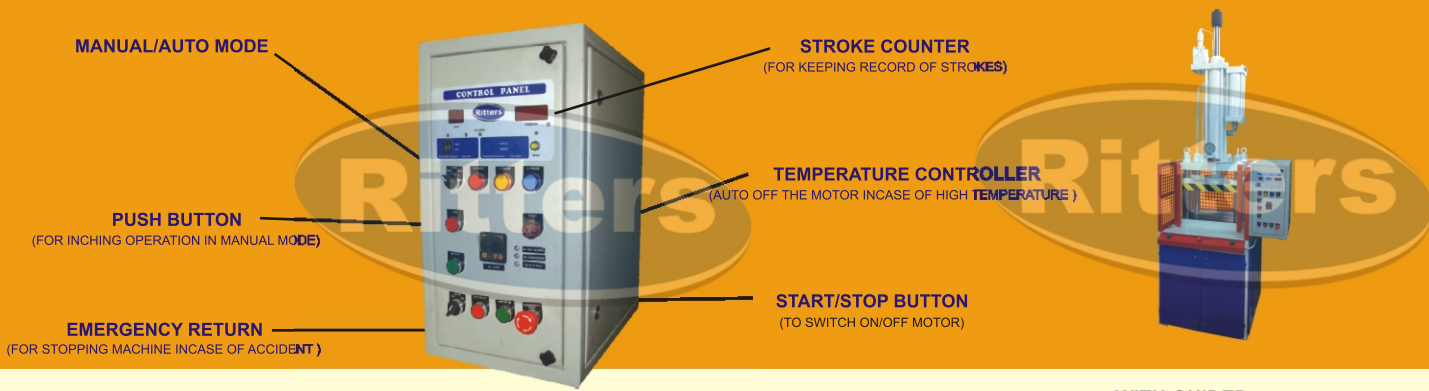
## TECHNICAL DATA



WITH ARG	WITH GMP	TON	A	B	C	D	E	F	G	H	J	ØK	L	L1	M	M1	N	ØO	P	ØQ	T	U	V	W	X	Y	Z1	Z2
RA-03-HCAF	RA-03-HCGF	3	550	1450	125	250	350	260	250	250	38	20	25	38	10	10	M6	60	18	45	10	75	880	355	275	200	450	450
RA-05-HCAF	RA-05-HCGF	5	600	1670	150	300	400	285	280	280	43	25	30	43	10	12	M8	75	18	55	10	100	945	355	340	200	500	500
RA-10-HCAF	RA-10-HCGF	10	650	1960	175	300	500	360	350	350	53	25	40	53	10	12	M8	105	20	75	12	100	950	400	420	230	550	550
RA-15-HCAF	RA-15-HCGF	15	700	1970	200	350	550	400	380	380	62	30	60	62	10	12	M8	130	25	90	12	125	950	400	450	250	600	600
RA-20-HCAF	RA-20-HCGF	20	700	1970	200	350	550	400	380	380	62	30	60	62	10	12	M8	130	25	90	12	125	950	400	450	250	600	600
RA-30-HCAF	RA-30-HCGF	30	900	1980	200	350	600	440	380	380	72	40	80	72	12	15	M10	130	25	90	12	125	950	400	500	250	650	650
RA-50-HCAF	RA-50-HCGF	50	1100	2250	200	400	750	475	400	400	80	40	80	72	12	20	M12	130	30	90	16	150	960	400	525	250	750	750

# 4 PILLAR PRESS

## TECHNICAL DATA

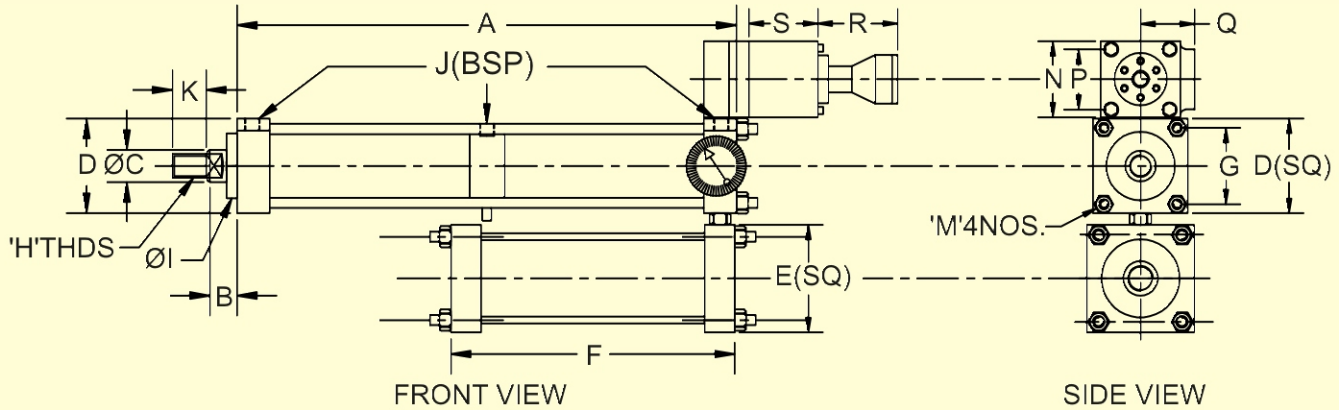


WITH ARG	WITH GMP	TON	A	B	C	D	H	ØK	L	L1	M	N	ØO	P	ØQ	T	U	Z1	Z2
RA-03-H4PA	RA-03-H4PG	3	350	300	250	270	32	20	25	32	10	M6	60	18	45	10	75	450	450
RA-05-H4PA	RA-05-H4PG	5	400	300	300	300	38	25	30	38	10	M8	75	18	55	10	75	500	500
RA-10-H4PA	RA-10-H4PG	10	500	350	350	350	53	25	40	53	10	M8	105	20	75	12	75	550	550
RA-15-H4PA	RA-15-H4PG	15	510	350	350	350	58	25	50	58	10	M8	130	25	90	16	80	600	600
RA-20-H4PA	RA-20-H4PG	20	510	350	350	350	62	25	60	62	10	M8	130	25	90	16	80	600	600
RA-30-H4PA	RA-30-H4PG	30	590	400	400	400	72	30	80	72	10	M10	130	25	90	16	90	650	650
RA-50-H4PA	RA-50-H4PG	50	830	600	600	450	100	40	80	100	12	M12	130	30	90	16	100	750	700



# HIGH SPEED HYDRAULIC CYLINDER

## Technical Data



MODEL NO.	TON	TOTAL STROKE	PUMP	HP	W.Pr.	APP.RET. SPEED MM/SEC	PRESS SPEED MM/SEC	APP.RET. LOAD/KG	A	B	C	D (SQ.)	E (SQ.)	F	G	H	ØI	J	K	M	N	P	Q	R	S
HS-03-50	3	50	6	1.5	85	220	28	385	350	40	32	90	110	320	65	M24X2	65	3/8"BSP	35	M12X1.75	100	75	65	127	103
HS-03-75	3	75	6	1.5	85	220	28	385	400	40	32	90	110	320	65	M24X2	65	3/8"BSP	35	M12X1.75	100	75	65	127	103
HS-03-100	3	100	6	1.5	85	220	28	385	450	40	32	90	110	320	65	M24X2	65	3/8"BSP	35	M12X1.75	100	75	65	127	103
HS-03-150	3	150	6	1.5	85	220	28	385	550	40	32	90	110	420	65	M24X2	65	3/8"BSP	35	M12X1.75	100	75	65	127	103
HS-03-200	3	200	6	1.5	85	220	28	385	650	40	32	90	110	420	65	M24X2	65	3/8"BSP	35	M12X1.75	100	75	65	127	103
HS-05-50	5	50	8	2	95	290	24	430	380	40	32	110	125	330	84.5	M24X2	65	1/2"BSP	35	M16X2	100	75	65	127	103
HS-05-75	5	75	8	2	95	290	24	430	430	40	32	110	125	330	84.5	M24X2	65	1/2"BSP	35	M16X2	100	75	65	127	103
HS-05-100	5	100	8	2	95	290	24	430	480	40	32	110	125	330	84.5	M24X2	65	1/2"BSP	35	M16X2	100	75	65	127	103
HS-05-150	5	150	8	2	95	290	24	430	580	40	32	110	125	430	84.5	M24X2	65	1/2"BSP	35	M16X2	100	75	65	127	103
HS-05-200	5	200	8	2	95	290	24	430	680	40	32	110	125	430	84.5	M24X2	65	1/2"BSP	35	M16X2	100	75	65	127	103
HS-10-50	10	50	10	3	120	200	19	990	430	52	38	135	165	340	105	M36X2	100	1/2"BSP	50	M20X2.5	100	75	65	127	103
HS-10-75	10	75	10	3	120	200	19	990	480	52	38	135	165	340	105	M36X2	100	1/2"BSP	50	M20X2.5	100	75	65	127	103
HS-10-100	10	100	10	3	120	200	19	990	530	52	38	135	165	340	105	M36X2	100	1/2"BSP	50	M20X2.5	100	75	65	127	103
HS-10-150	10	150	10	3	120	200	19	990	630	52	38	135	165	440	105	M36X2	100	1/2"BSP	50	M20X2.5	100	75	65	127	103
HS-10-200	10	200	10	3	120	200	19	990	730	52	38	135	165	440	105	M36X2	100	1/2"BSP	50	M20X2.5	100	75	65	127	103
HS-15-50	15	50	18	5	115	260	22	1310	490	75	50	165	190	350	126	M40X2	110	3/4"BSP	50	M24X3	100	75	65	127	103
HS-15-75	15	75	18	5	115	260	22	1310	540	75	50	165	190	350	126	M40X2	110	3/4"BSP	50	M24X3	100	75	65	127	103
HS-15-100	15	100	18	5	115	260	22	1310	590	75	50	165	190	350	126	M40X2	110	3/4"BSP	50	M24X3	100	75	65	127	103
HS-15-150	15	150	18	5	115	260	22	1310	690	75	50	165	190	450	126	M40X2	110	3/4"BSP	50	M24X3	100	75	65	127	103
HS-15-200	15	200	18	5	115	260	22	1310	790	75	50	165	190	450	126	M40X2	110	3/4"BSP	50	M24X3	100	75	65	127	103
HS-20-50	20	50	20	5	105	150	17	2300	520	75	60	190	190	450	150	M48X3	125	3/4"BSP	50	M24X3	120	90	75	157	113
HS-20-75	20	75	20	5	105	150	17	2300	570	75	60	190	190	450	150	M48X3	125	3/4"BSP	50	M24X3	120	90	75	157	113
HS-20-100	20	100	20	5	105	150	17	2300	620	75	60	190	190	450	150	M48X3	125	3/4"BSP	50	M24X3	120	90	75	157	113
HS-20-150	20	150	20	5	105	150	17	2300	720	75	60	190	190	450	150	M48X3	125	3/4"BSP	50	M24X3	120	90	75	157	113
HS-20-200	20	200	20	5	105	150	17	2300	820	75	60	190	190	450	150	M48X3	125	3/4"BSP	50	M24X3	120	90	75	157	113
HS-30-50	30	50	23	7.5	135	175	17	3065	520	75	60	190	210	450	156	M48X3	125	3/4"BSP	50	M30X3.5	120	90	75	157	113
HS-30-75	30	75	23	7.5	135	175	17	3065	570	75	60	190	210	450	156	M48X3	125	3/4"BSP	50	M30X3.5	120	90	75	157	113
HS-30-100	30	100	23	7.5	135	175	17	3065	620	75	60	190	210	450	156	M48X3	125	3/4"BSP	50	M30X3.5	120	90	75	157	113
HS-30-150	30	150	23	7.5	135	175	17	3065	720	75	60	190	210	450	156	M48X3	125	3/4"BSP	50	M30X3.5	120	90	75	157	113
HS-30-200	30	200	23	7.5	135	175	17	3065	820	75	60	190	210	450	156	M48X3	125	3/4"BSP	50	M30X3.5	120	90	75	157	113
HS-50-50	50	50	31	7.5	100	180	10	2830	475	85	80	325	325	500	247	M56X3	150	1"BSP	60	M42X4.5	120	90	75	157	113
HS-50-75	50	75	31	7.5	100	180	10	2830	525	85	80	325	325	500	247	M56X3	150	1"BSP	60	M42X4.5	120	90	75	157	113
HS-50-100	50	100	31	7.5	100	180	10	2830	575	85	80	325	325	500	247	M56X3	150	1"BSP	60	M42X4.5	120	90	75	157	113
HS-50-150	50	150	31	7.5	100	180	10	2830	775	85	80	325	325	500	247	M56X3	150	1"BSP	60	M42X4.5	120	90	75	157	113
HS-50-200	50	200	31	7.5	100	180	10	2830	875	85	80	325	325	500	247	M56X3	150	1"BSP	60	M42X4.5	120	90	75	157	113

### Salient Features

- **Faster Action** : Faster than Conventional Hydraulic/Pneumatic/Hydro-Pneumatic Presses
- **Energy Efficient** : Energy Efficient over equivalent Hydraulic/Pneumatic/ Hydro-Pneumatic Presses.
- **Flexibility** : Maximum Job Pressing Stroke available is upto Total stroke.
- **Low Oil Temperature** : Powerpack oil temperature is low compare to conventional Hydraulic Presses.

**Ritters Automation Pvt. Ltd.**

M-160, Sector-1, DSIDC, Bawana, New Delhi - 110039

Ph. : 27753720-1-2, Fax +91-11-27753719

Email : info@ritersindia.com Website : www.rittersindia.com